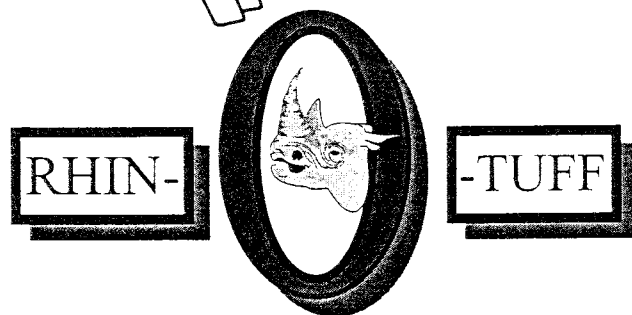
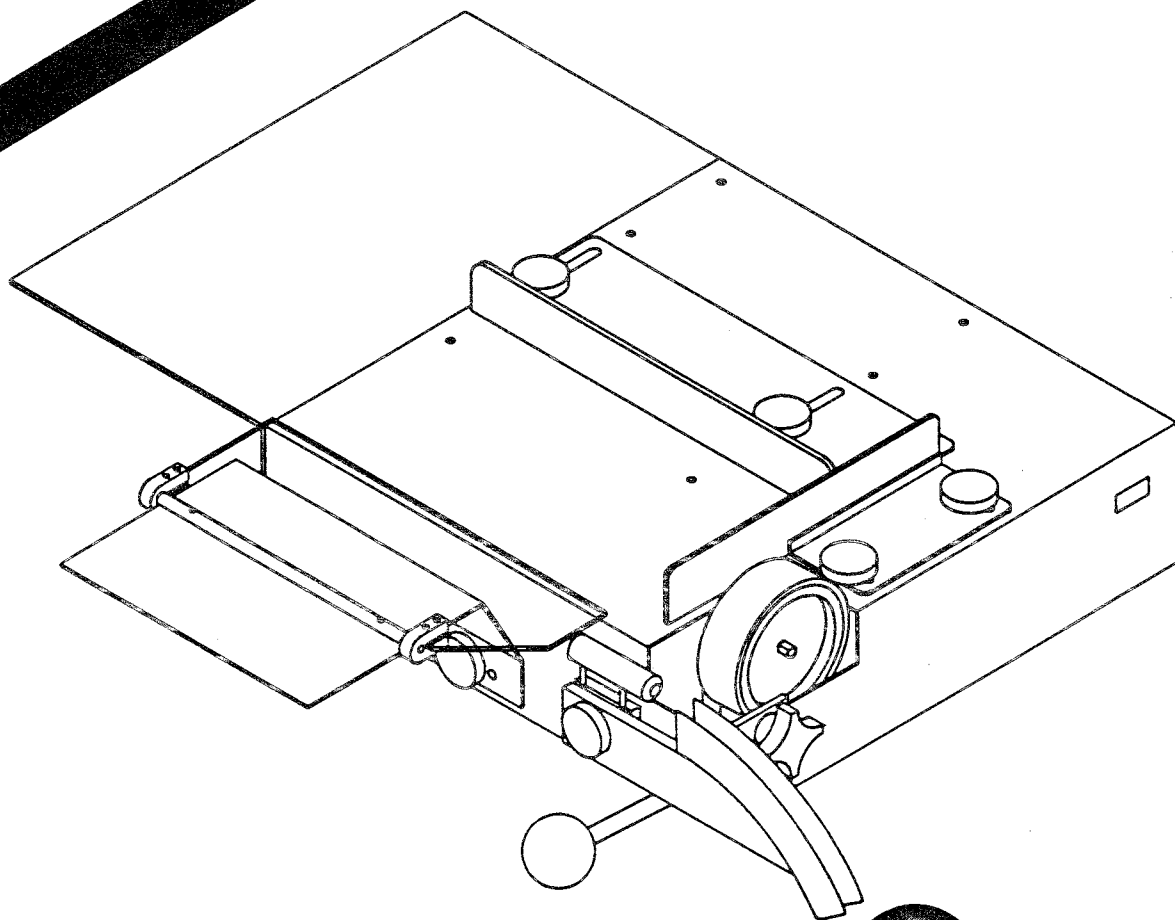


**PDI** Performance Design Inc.

# CI-3000 PARTS BOOK

- Coil Inserter -



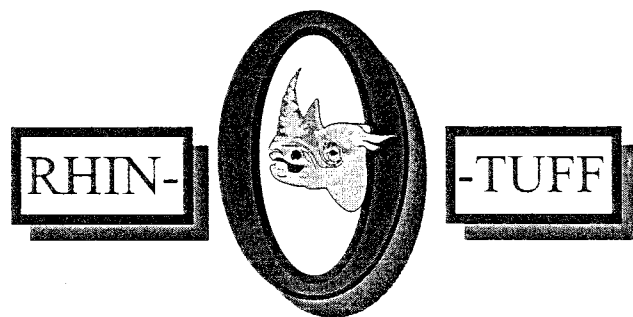
Mailing Address: 2350 E. Braniff, Boise, Idaho 83716-9613

Telephone: 208-384-8551

Fax: 208-384-8583

Electronic Mail: [PDI@PDIBIND.com](mailto:PDI@PDIBIND.com)

Web Site: [www.RHIN-O-TUFF.com](http://www.RHIN-O-TUFF.com)



# CI-3000 PARTS BOOK

Page 1

- Table Of Contents -

Table Of Contents	1
Trouble Shooting	2
Operating Instructions	3
Electrical Components	4
Motor Assembly	5
Tables & Coil Guide	6 & 7
Wiring Diagram	8

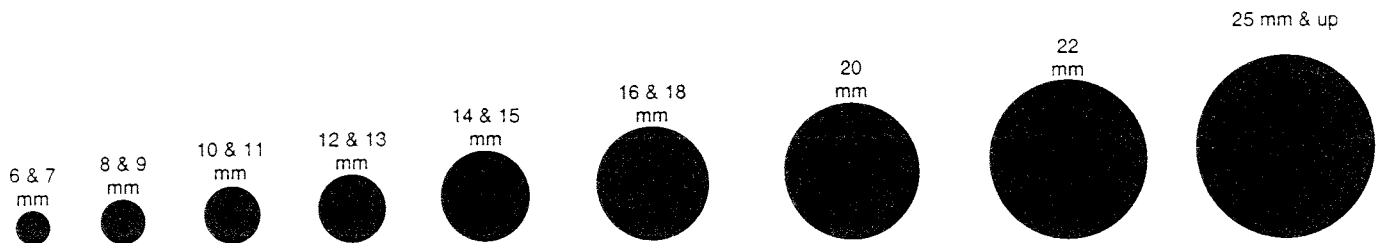
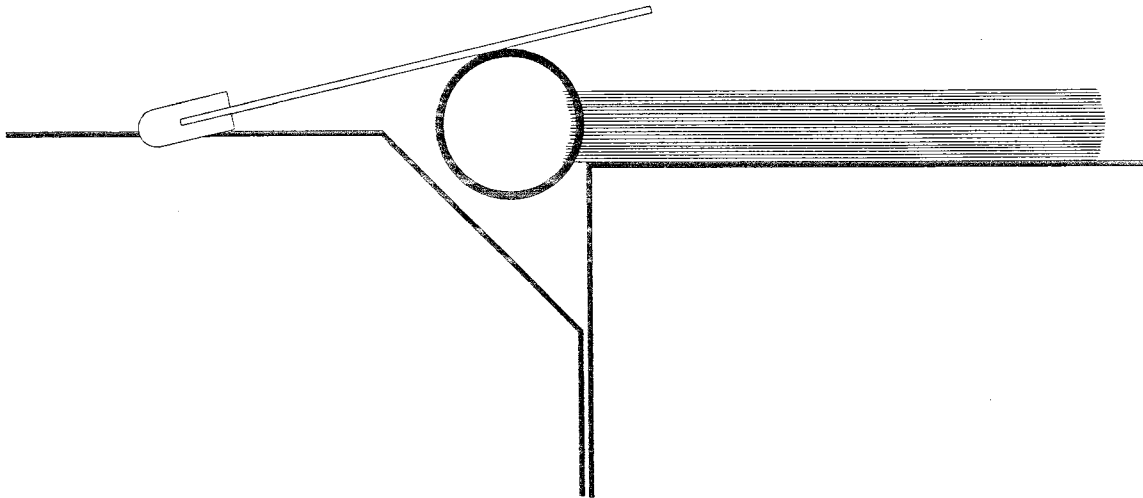
1. Make sure Mandrel is proper size. Too much play around the Mandrel or not enough may be a problem.
2. Make sure the Mandrel is at the proper height. Mandrel should be parallel with the machine surface and centered on book.
3. Make sure the proper size coil is being used for the number of sheets being bound. Too few sheets without and covers will create a problem. Too many sheets with coil being too small will not insert.
4. Over sized covers make starting and inserting coil very difficult.
5. When coiling thicker books using front table, make sure the table is at proper height. If table is too high, this will create a problem.
6. If you tie a knot in your coil, do not attempt to untie. This is a waste of time. Cut the coil and start over. Driving too hard with the drive wheel is not necessary. **Drive wheel must make contact gently.** You may even want to pump handle first to get the coil started, then apply even pressure.
7. Do not hold your hand on printed material while trying to spin the coil through the book. Allow the coil to the proper contour and pitch. The coil will move sheets and holes into proper position.
8. If problems persist, try holding tour fingers gently on the lead edge of the coil as it is spinning through the book.
9. If you are still experiencing difficulties, please contact us at 208-384-8551.

# CI-3000 PARTS BOOK

Page 3

## - Operating Instructions -

- 1: Choose Proper Mandrel for Coil Being used. There are 9 different sizes of Mandrels. Choose a Mandrel size 1/16 inch smaller than inside of coil. Mandrel height adjustment should be approximately on centerline of book laying on surface. Mandrel should be installed with long ind towards the Coil Guide.
- 2: Slide Coil over long end of Mandrel, while Coil lays in Coil Guide. Spin Coil by hand or by engaging Ruber Drive Wheel to the end of Mandrel.
- 3: Place Printed Material on Machine Surface, jogging sheets so all Punched Holes line up. Insert Leading Edge of Coil into first two Holes in Book.
- 4: Lay Lexan Guide on top of Coil and adjust the Table Height so that the Lexan Guide is at an incline, with the back end slightly higher than the front (see illustration below ). The Table **MUST BE LEVEL** from side to side in order for the Lexan Guide to work properly.
- 5: **GENTLY** engage Drive Wheel against the Coil to spin Coil thru the Book.
- 6: Use Cutter Crimper Pliers, with red dot in up position, to cut and crimp Coil. First cut the end closest to the Drive Wheel. Then flip book over, from left to right, and crimp.



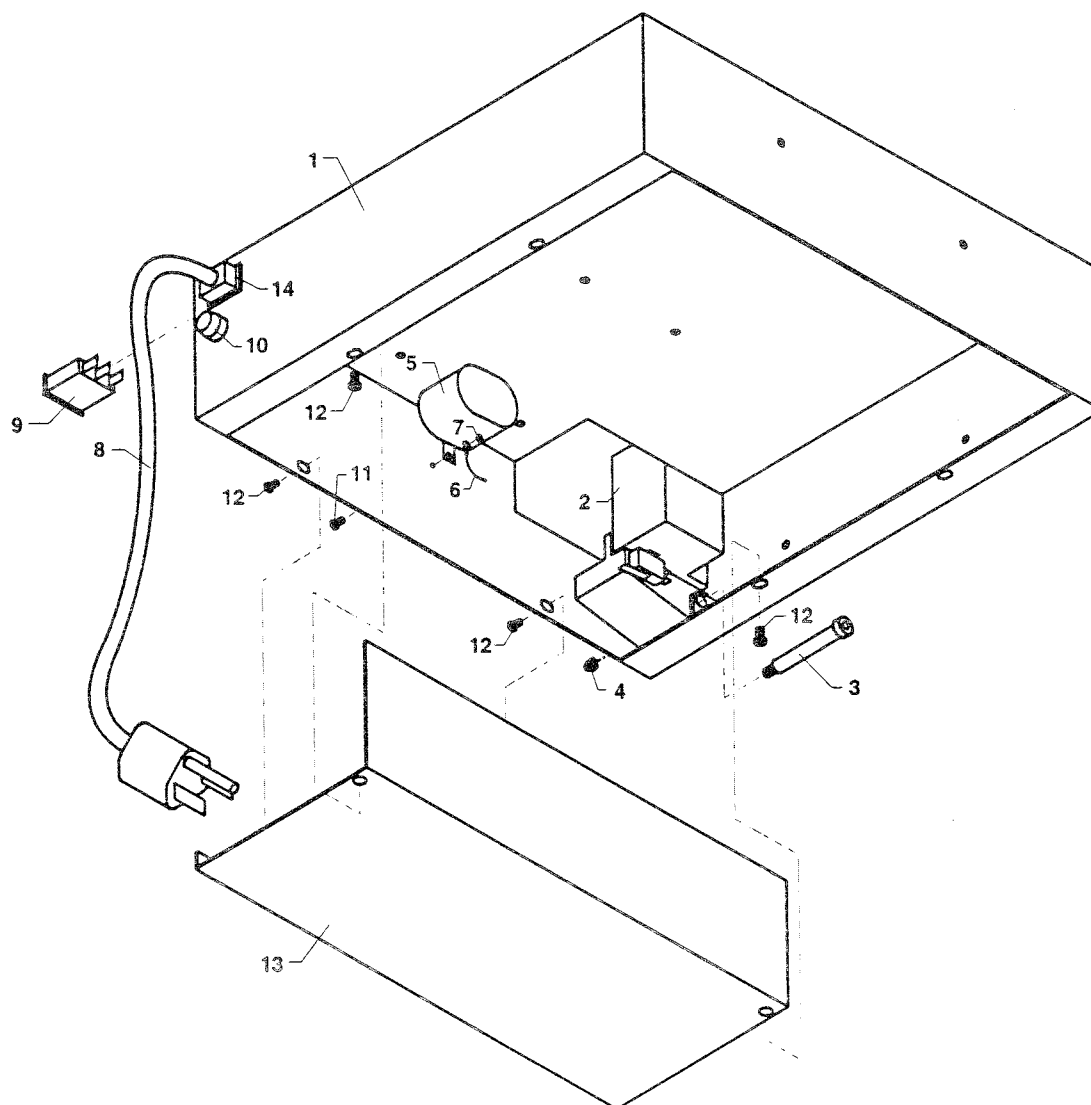
**PDi** Performance Design Inc.

2350 E. Braniff, Boise, Idaho 83716 / 208-384-8551 / PDI@PDIBIND.com / www.RHIN-O-TUFF.com

# CI-3000 PARTS BOOK

Page 4

- Electrical Components -



INDEX NO.	PART NO.	PART NAME	NO. REQ.
1	030770	COVER	1
2	SEE PAGE 5	MOTOR ASSEMBLY	1
3	005250	3/8 X 2 SHOULDER BOLT	1
4	004080	5/16 ACORN NUT	1
5	007310	CAPACITOR & BRACKET	1
6	SEE PAGE 8	GROUND WIRE (GREEN)	1
7	004050	4-40 NYLOC NUT	1
8	007090	POWER CORD (SHIPPING KIT)	1
9	007180	POWER SWITCH	1
10	007000	FUSE HOLDER	1
11	002110	4-40 X 1/2 MACHINE SCREW	1
12	002060	10-32 X 1/2 SCREW	4
13	030880	BOTTOM PAN	1
14	007050	POWER INLET	1

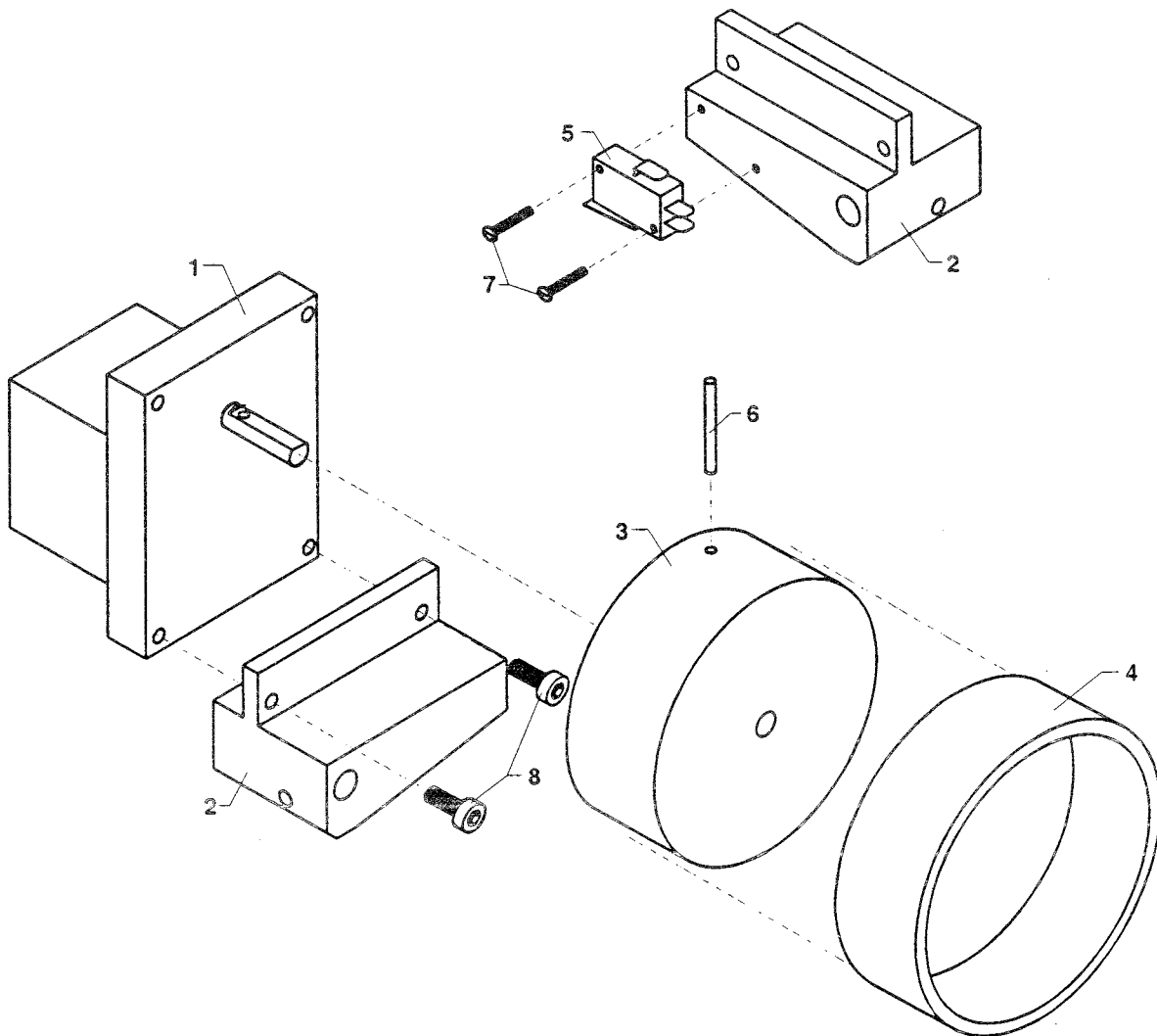
**PDi** Performance Design Inc.

2350 E. Braniff, Boise, Idaho 83716 / 208-384-8551 / PDI@PDIBIND.com / www.RHIN-O-TUFF.com

# CI-3000 PARTS BOOK

Page 5

- Motor Assembly -



INDEX NO.	PART NO.	PART NAME	NO. REQ.
1	007170	MOTOR	1
2	020210	MOTOR MOUNT	1
3	020120	DRIVE WHEEL (NOT IN ASSM)	1
4	030450	RUBBER WHEEL	1
5	007240	LIMIT SWITCH	1
6	001490	1/8 X 1 ROLL PIN	1
7	002110	4-40 X 1/2 MACHINE SCREW	2
8	005240	8-32 X 3/4 SHCS BOLT	2

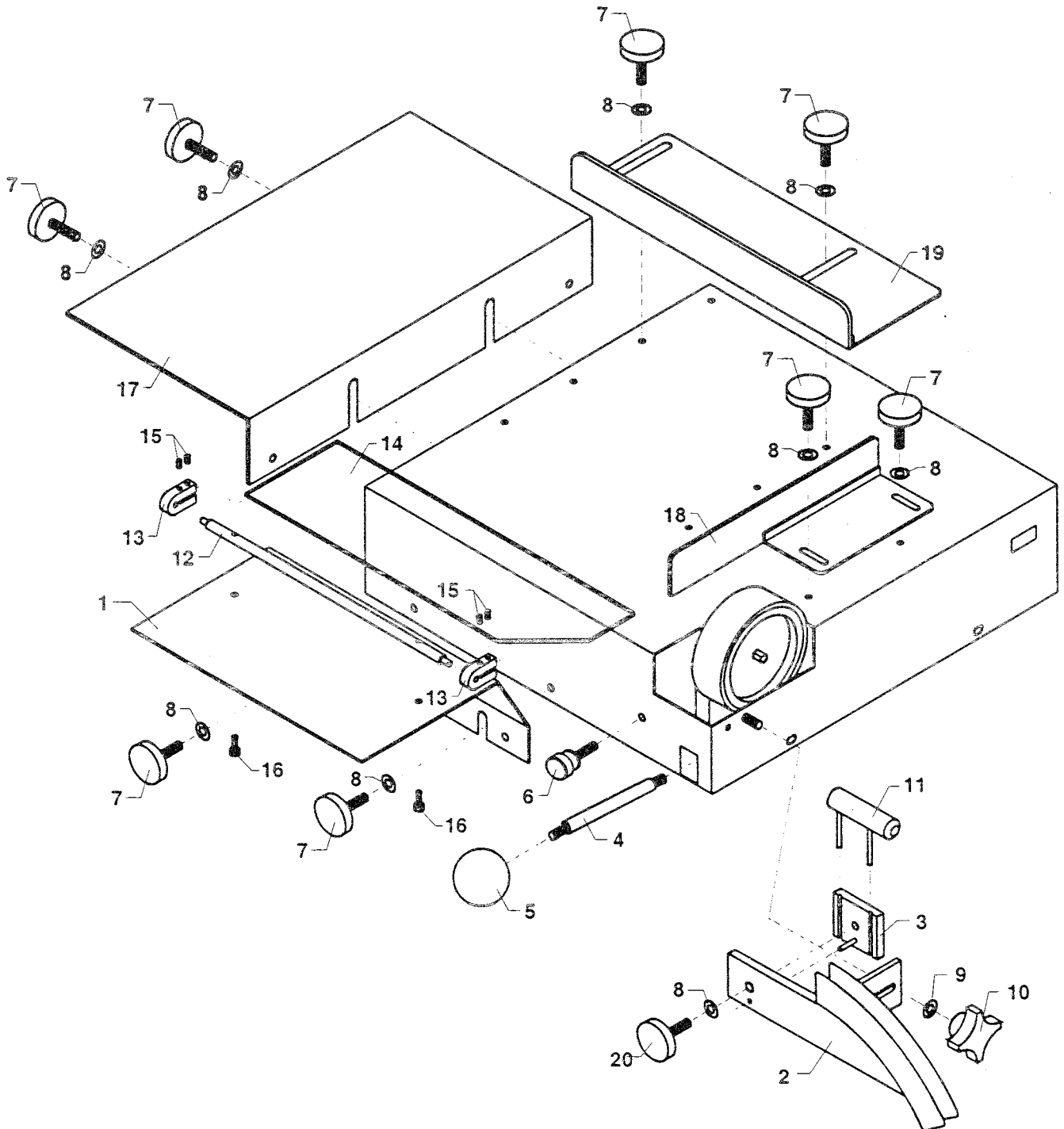
**PDi** Performance Design Inc.

2350 E. Braniff, Boise, Idaho 83716 / 208-384-8551 / PDI@PDIBIND.com / www.RHIN-O-TUFF.com

# CI-3000 PARTS BOOK

Page 6

- Tables And Coil Guide -





# CI-3000 PARTS BOOK

Page 7

- Tables And Coil Guide -  
(Some Parts Bundled In Kits Or Assemblys)

INDEX NO.	PART NO.	PART NAME	NO. REQ.
2	030140	COIL GUIDE WELD ASSM.	1
3	030280	MANDREL ADJUSTMENT PLATE	1
	001240	1/8 X 1/2 ROLL PIN	1
4	030410	ENGAGEMENT SHAFT	1
5	001480	1/4-20 FEM. 1" ROUND KNOB	1
6	031010	PIVOT STOP ASSM.	1
7	001134	1/4-20 X 3/4 STUDDERED KNOB	2
8	003090	1/4 FLAT WASHER	3
9	003080	5/16 SAE FLAT WASHER	1
10	001270	5/16-18 FEM. FLUTED KNOB	1
11	SEE BELOW	MANDRELS	9
17	030240	LARGE TABLE	1
18	030870	PAPER GUIDE	1
19	030800	PAPER STOP	1
20	001317	1/4-20 X 1/2 KNOB	1

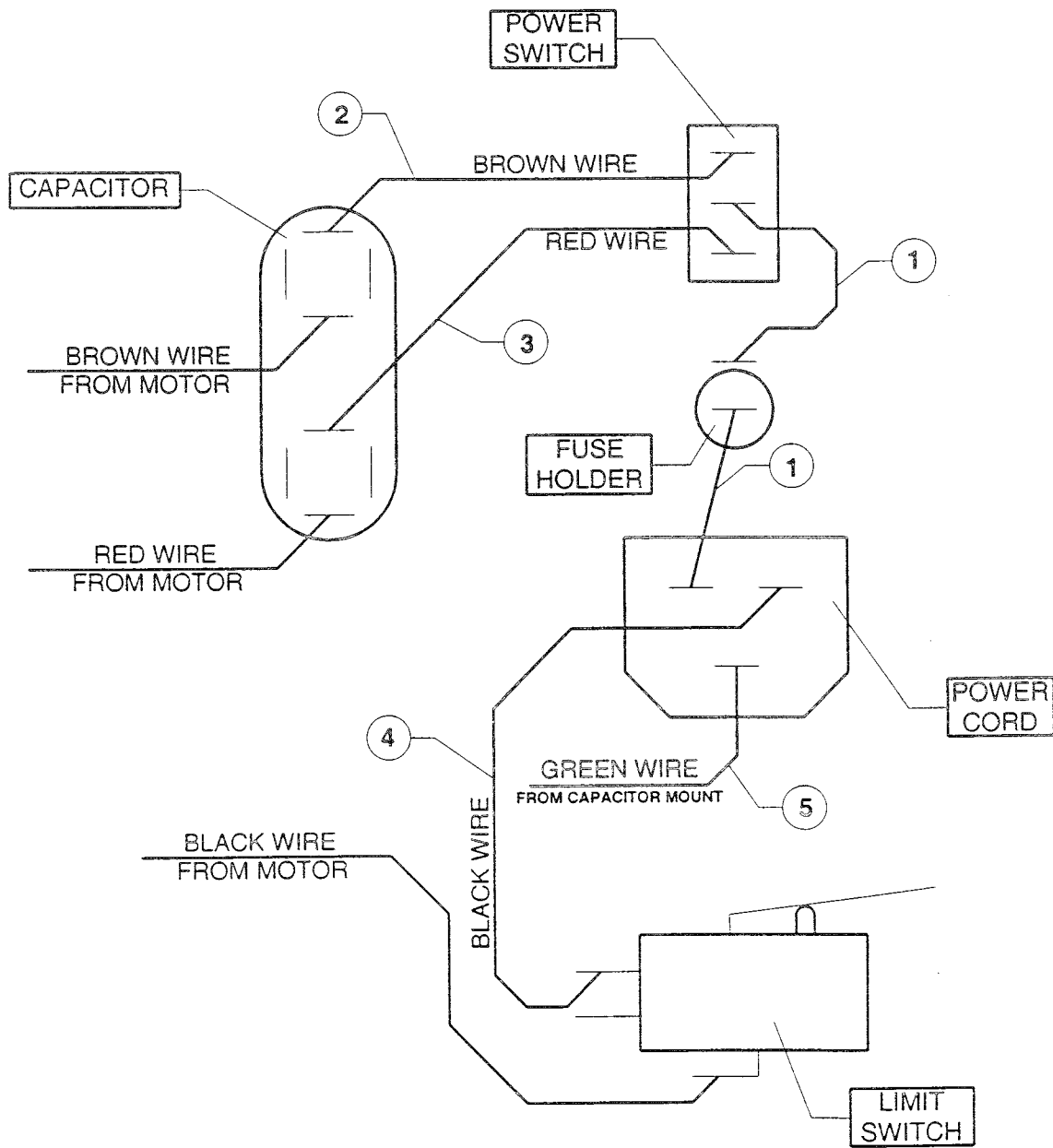
MANDRELS PART NO. 030670	
PART NO.	PART NAME
030620	3/16" MANDREL ASSM.
030610	1/4" MANDREL ASSM.
030600	5/16" MANDREL ASSM.
030590	3/8" MANDREL ASSM.
030580	1/2" MANDREL ASSM.
030570	5/8" MANDREL ASSM.
030850	3/4" MANDREL ASSM.
030860	7/8 MANDREL ASSM.
030870	1" MANDREL ASSM.

SMALL TABLE RETRO FIT KIT PART NO. 020270			
INDEX NO.	PART NO.	PART NAME	NO. REQ.
1	020110	SMALL TABLE	1
12	030980	SMALL TABLE SHAFT	1
13	030990	LEXAN MOUNT	2
14	031020	LEXAN GUIDE	1
15	002120	10-24 X 1/4 SET SCREW	4
16	005290	8-32 X 1/4 SHCS	2

# CI-3000 PARTS BOOK

Page 8

- Wiring Diagram -



INDEX NO.	PART NO.	PART NAME	NO. REQ.
1	050760	JUMP WIRE ASSM.	2
2	031030	REVERSE WIRE ASSM.	1
3	031040	POWER WIRE ASSM.	1
4	031050	LIMIT SWITCH WIRE ASSM.	1
5	020250	GROUND WIRE ASSM.	1

**PDI** Performance Design Inc.

2350 E. Braniff, Boise, Idaho 83716 / 208-384-8551 / PDI@PDIBIND.com / www.RHIN-O-TUFF.com